



# SURFACE MATTERS™

2 0 2 4 - 2 0 2 6










Distributed and Marketed by:  
 Technoscape Building Materials Trading Co LLC  
 Al Quoz Industrial Area 4,  
 Al Quoz, Dubai, United Arab Emirates,  
 PO.Box 452012, Dubai.  
 +97 144561240 | sales@technoscape.ae

Manufacture by:  
 Pegasus Panels PVT. LTD.  
 603, The Ambience Court,  
 Plot No. 2, Sector-19 D, Vashi, Navi Mumbai,  
 Maharashtra, India, Pin 400 705  
 www.dorbypanels.com



# SURFACE MATTERS™

2 0 2 4 - 2 0 2 6



Dorby is a leading manufacturer of high-quality laminates known for their durability, versatility, and aesthetic appeal. With a commitment to innovation and excellence, we strive to meet the evolving needs of our customers in the interior design and construction industries. Our extensive range of laminates offers a wide variety of colors, textures, and finishes to suit diverse design preferences, from traditional to contemporary styles.

We take pride in our state-of-the-art manufacturing facilities and stringent quality control measures to ensure that every laminate produced meets the highest standards of quality and performance. Our team of skilled professionals is dedicated to delivering products that not only enhance the visual appeal of spaces but also offer practical solutions for everyday use. Whether you are designing a residential, commercial, or industrial space, Dorby is your trusted partner for premium laminates that combine style and functionality seamlessly.

**SURFACE<sup>TM</sup>  
MATTERS**  
2024 - 2026



*Surfaces*  
**INDIA**  
FROM  
**RESURFACING**  
**THE GLOBE**

# Product Features

BY DORBY

## 1. Aesthetics

Aesthetics are a priority in every space. We understand the human need to be in beautiful well maintained spaces and hence are focused on introducing beauty to every piece of furniture.



Unique Designs



High Flexibility



High Gloss

## 2. Durability

Creating beautiful pieces that stand the test of time is our aim. Our range of laminates are weather resistant, scratch resistant, and antibacterial.



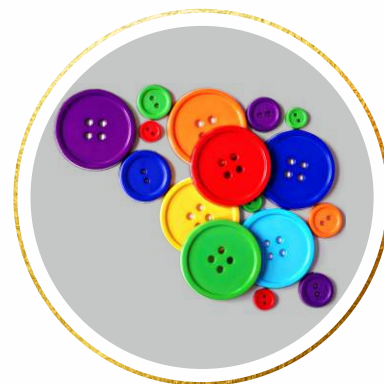
Scratch Resistance



All Weather Resistance



Antibacterial Laminates\*



Colour Fastening

## 3. Unparalleled

We believe that furniture reflects individual style, class and preferences. Hence our laminates are expressive, imaginative, unparalleled in quality and at par with the global standards.



Abrasion Resistant



Fire Retardant\*



Heat Resistant

## 4. Sustainability

Masterpieces are created when aesthetically irresistible designs are infused with the power to sustain human and environmental challenges.



Anti Fingerprint\*



Stain Resistant



Limited Lifetime Assurance\*



Static Load Sustenance



We understand that you put a lot of time and effort into designing spaces to perfection. That's why at Dorby, we go the extra mile to complement your efforts by fabricating surfaces that last a lifetime.

All our laminates are ISO 9001 and European Standard EN 4388:2018 certified and go through rigorous checks & manufacturing processes, so that we deliver quality surfaces with flawless finishes.



# How To Identify

YOUR DORBY



SF 1571 | VIRGINIA PINE

Design No. Name of Mica

-  Premium Plus
  -  Texture Premium
  -  Luxe
- DorbyEdge® Exclusive Edge bands



Scan the QR code  
to view this catalogue  
on your mobile

# Index

**01** CANVAS COLLECTION  
Page: 01 TO 08

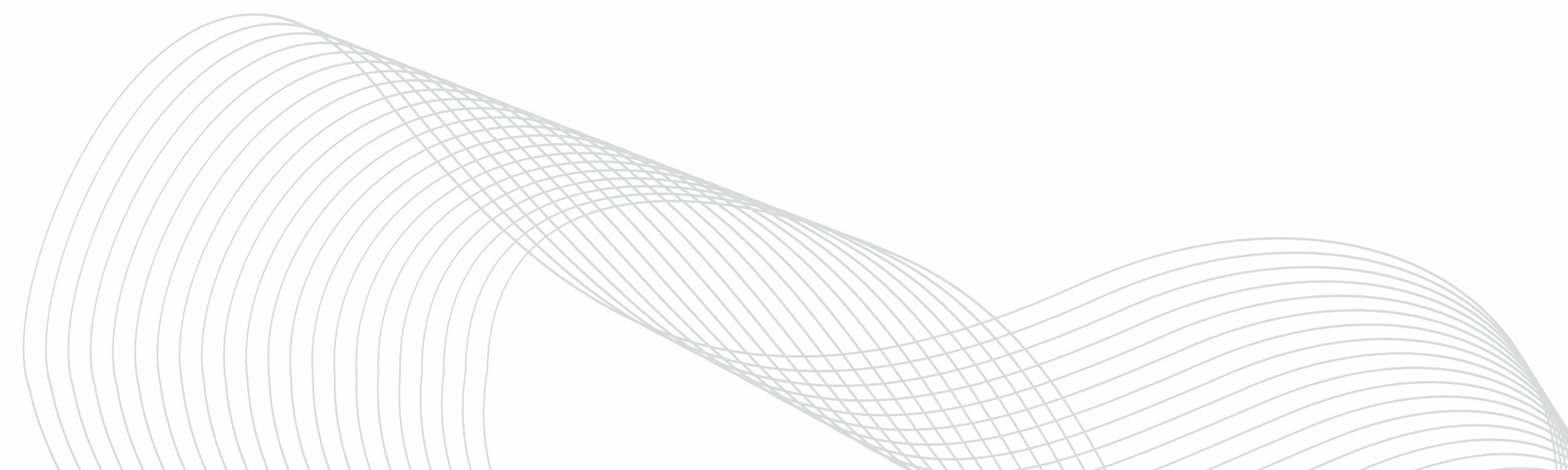
**02** CRUST AND RUST  
Page: 09 TO 12

**03** SASSY AND SYNCHRO  
Page: 13 TO 14

**04** MOODS AND WOODS  
Page: 15 TO 24

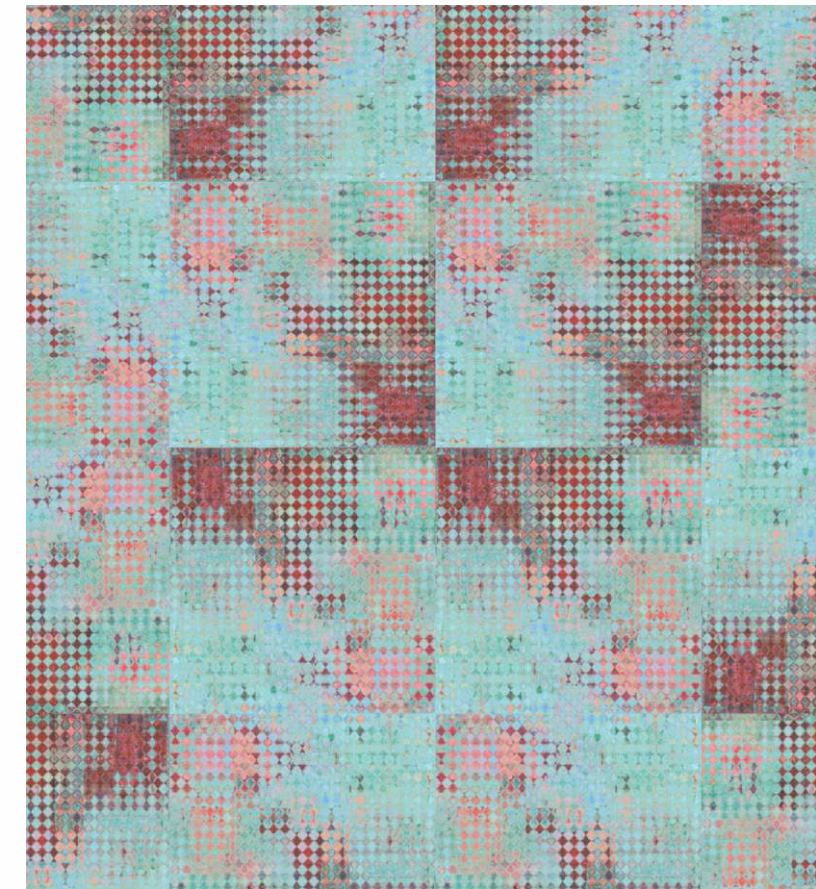
**05** ARC COLLECTION  
Page: 25 TO 26

**06** VIBRON®  
Page: 27 TO 37

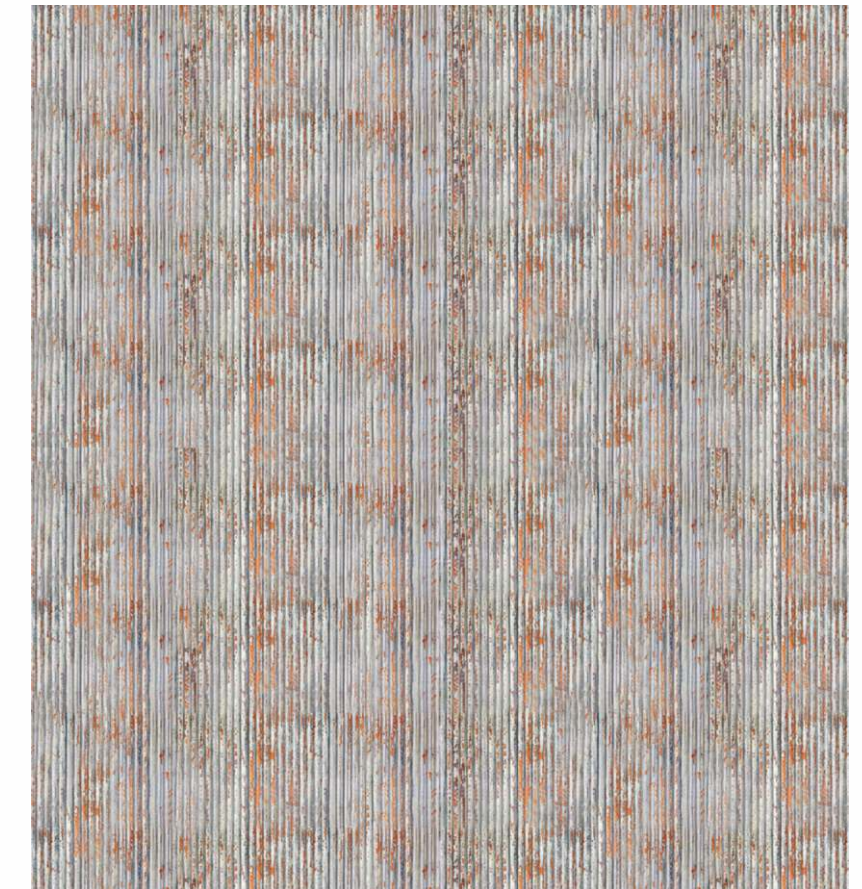


# CANVAS *Collection*

Laminates that beautifully turn every surface into an expression, bringing a touch of artistic elegance to your surfaces.



CYD 64 **P++**  
INFINITO



BFD 63 **P++**  
ECHO

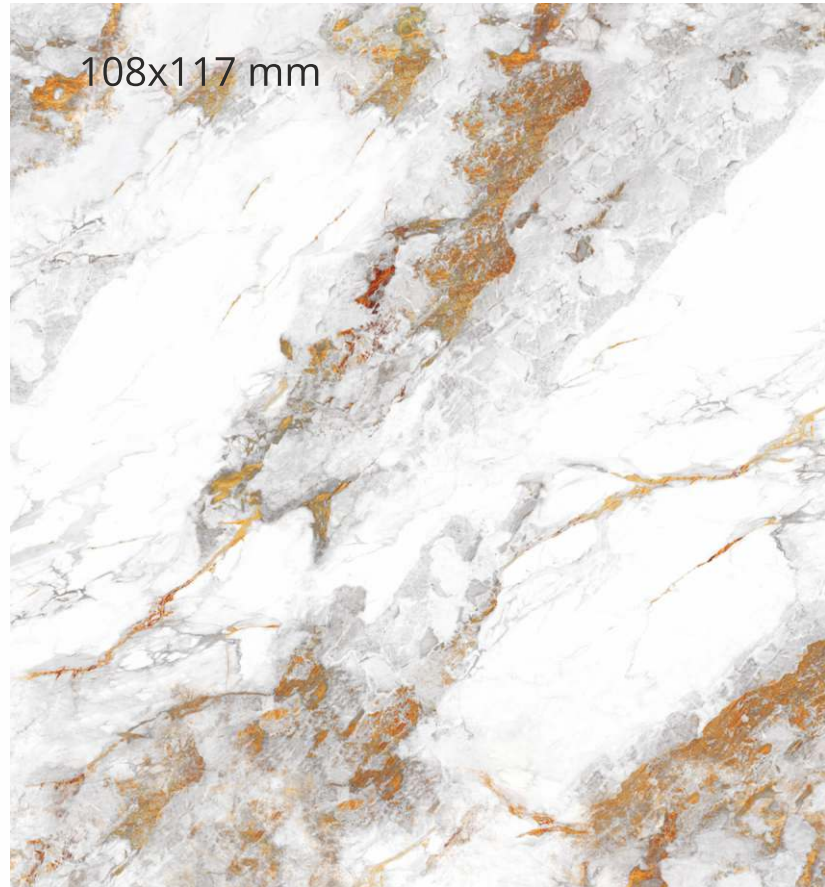


ZM 5223  
TELA



ZM 5224  
TELA WARM

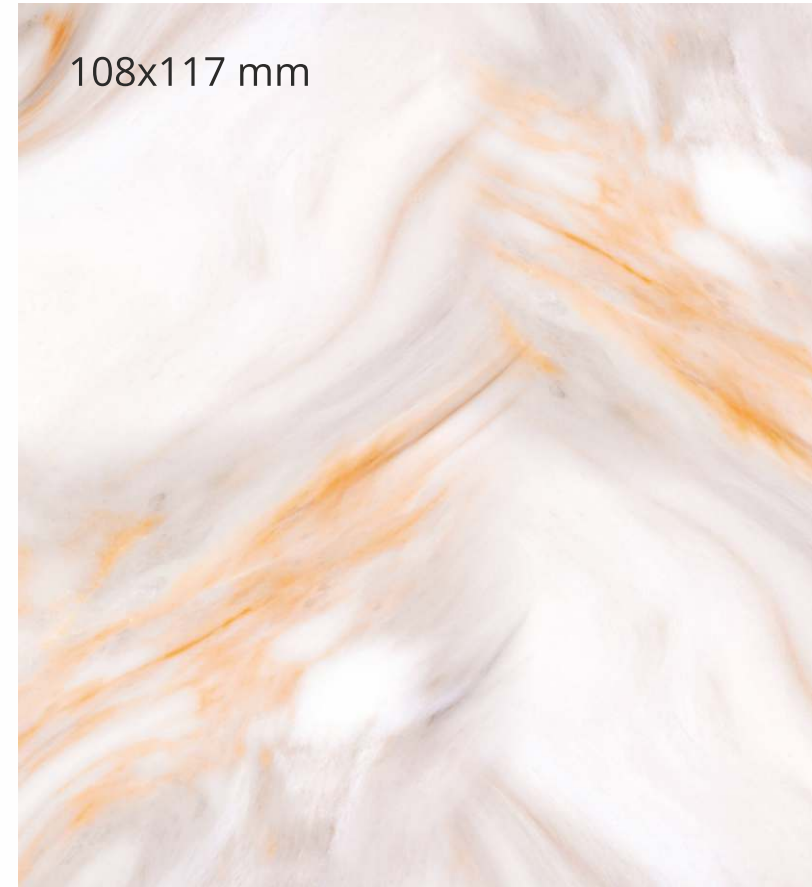
**P++** Exclusive



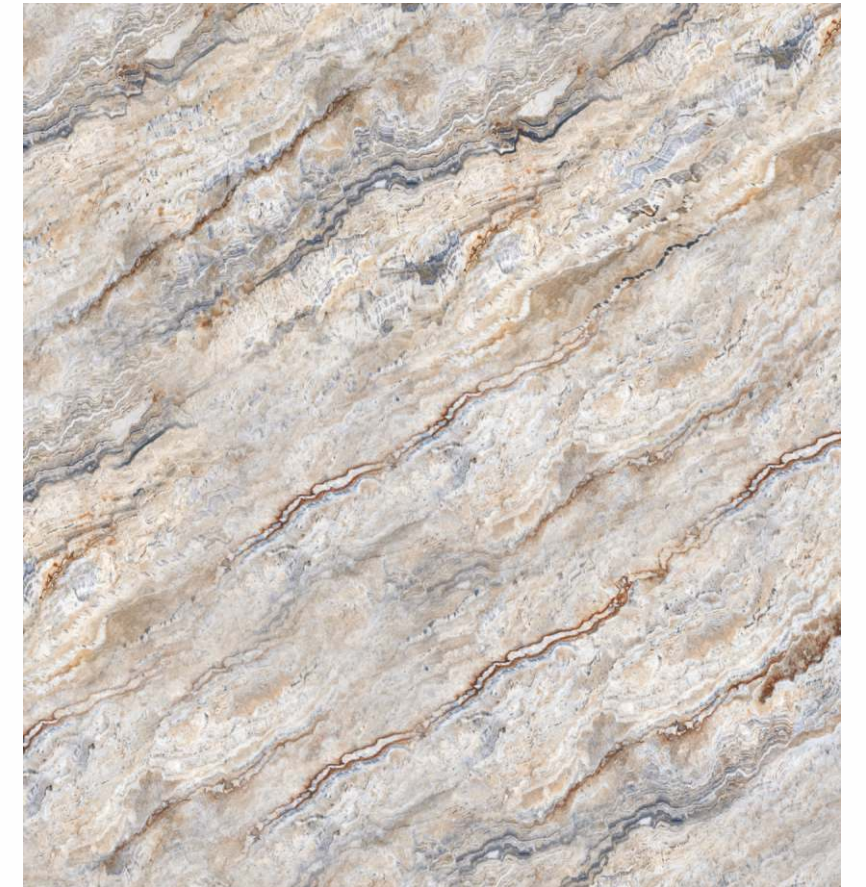
CYD 58 **P++**  
SOLACE



CYD 56 **P++**  
IBIZA



NLD 51 **P++**  
MULTI QUARTZ



CYD 59 **P++**  
MIRAGE



NLD 57 **P++**  
ONYX



NLD 54 **P++**  
CLAYLINE



ZSD 62 **P++**  
QUANTA



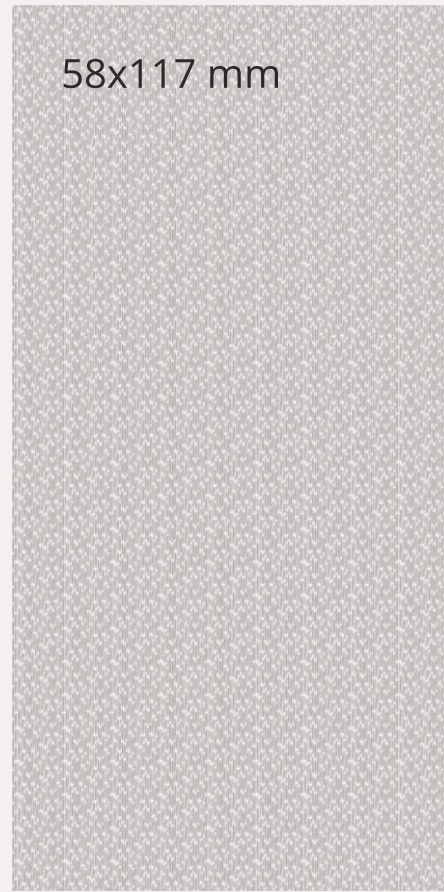
NLD 50 **P++**  
EARTHY BLU



LTD 60 **P++**  
BINACO

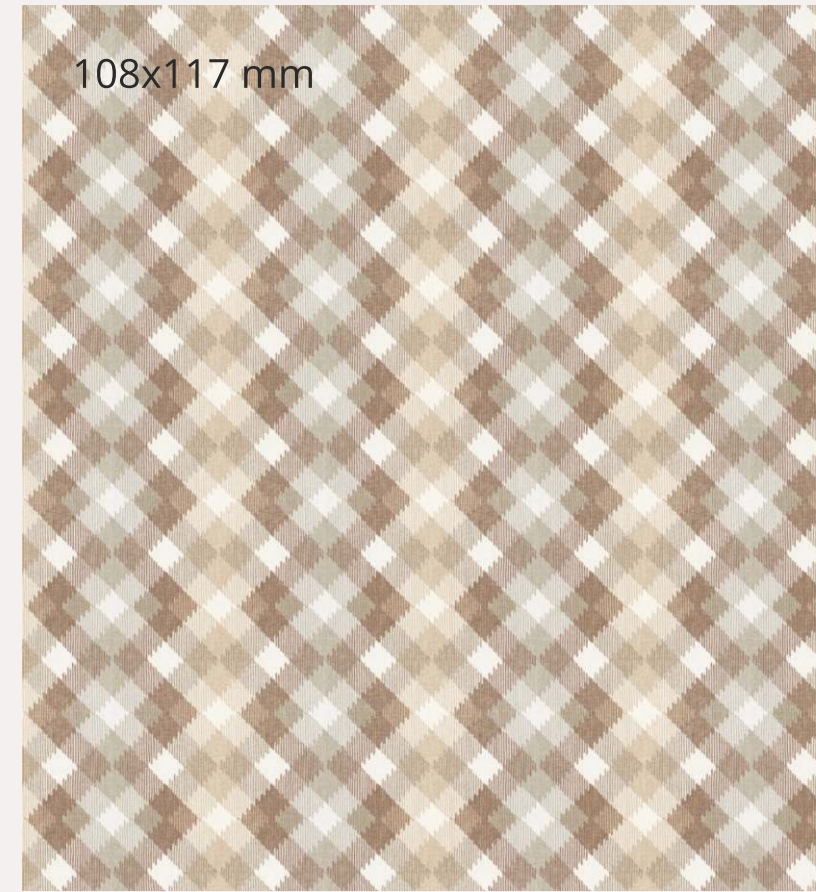


VRD 14 **P++**  
RIVEKA



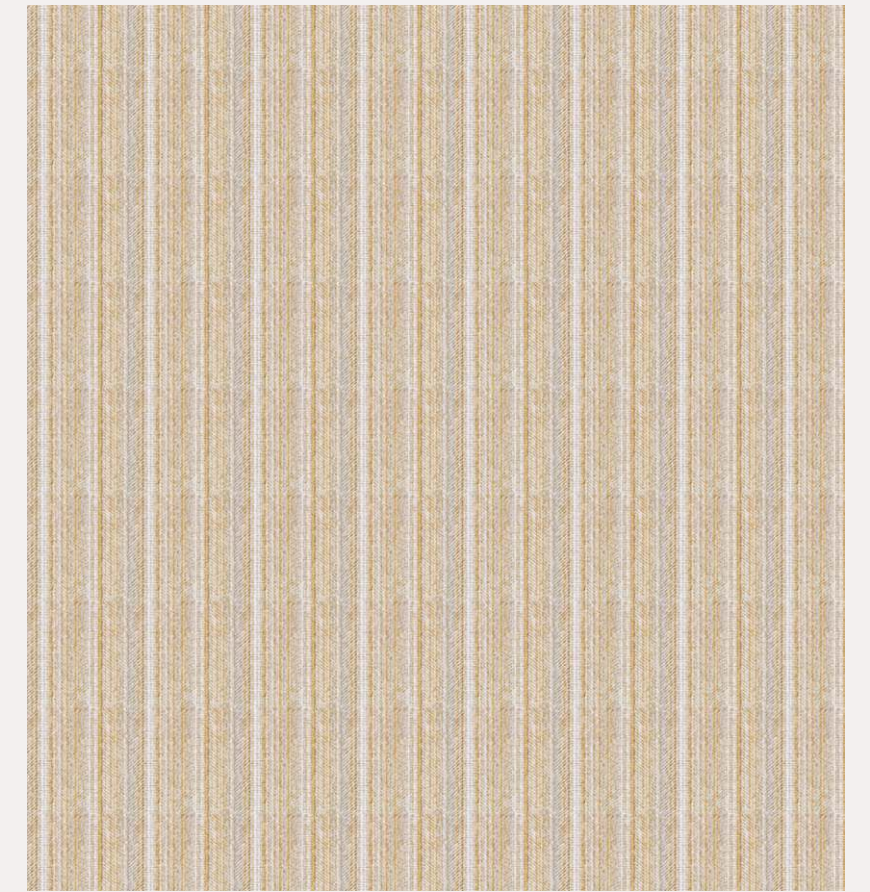
58x117 mm

LTD 68 **P++**  
RIPPLE



108x117 mm

LTD 66 **P++**  
JACQUARD

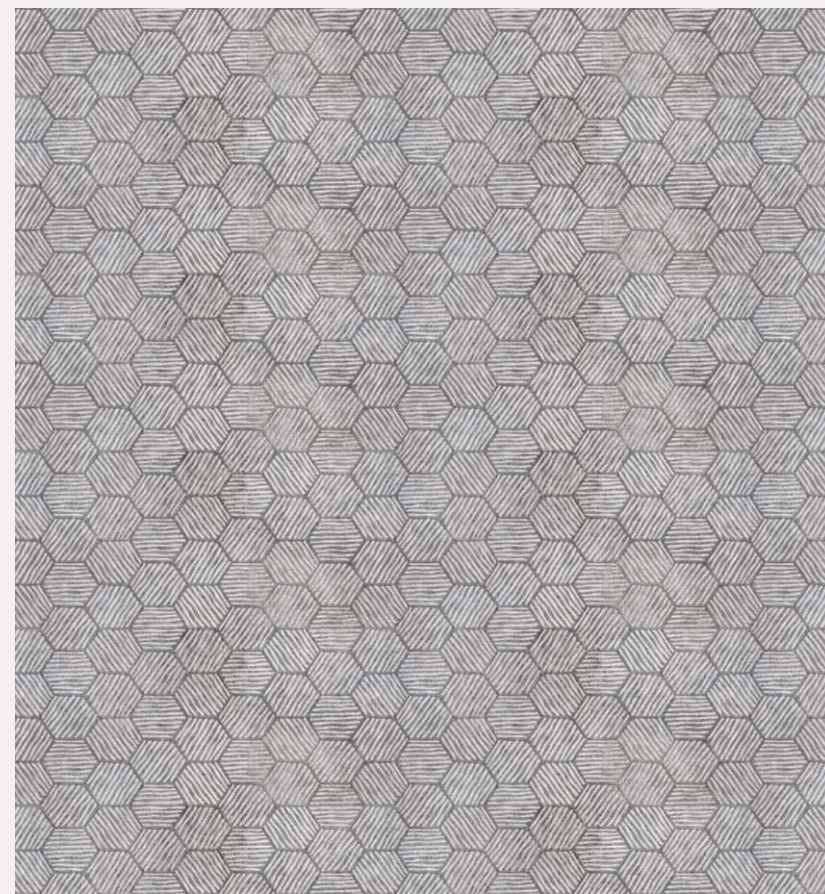


LTD 65 **P++**  
SYNCHRON

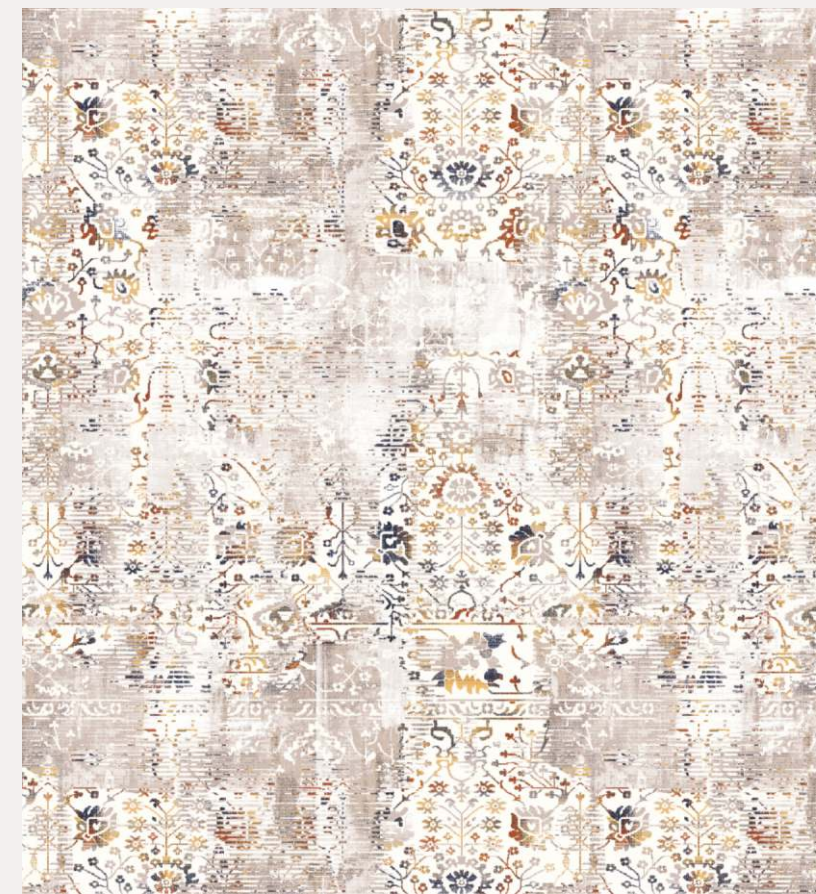


108x117 mm

LTD 02 **P++**  
MILANO



CYD 61 **P++**  
NEXUS



LTD 03 **P++**  
RITZ



LTD 67 **P++**  
ETHORA



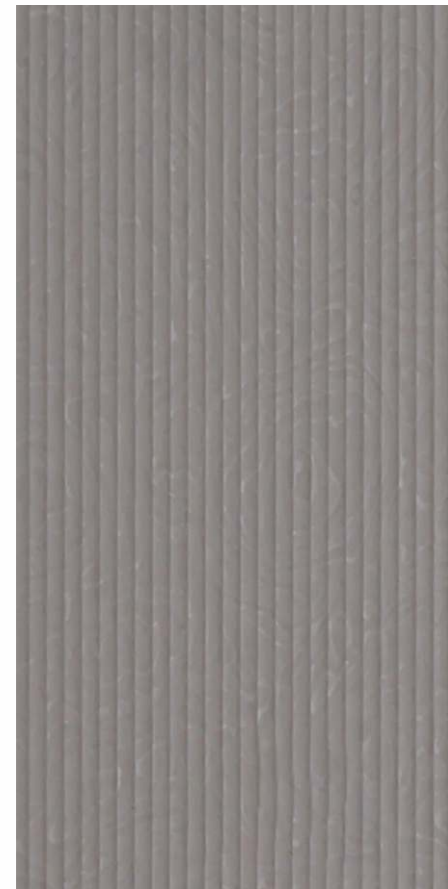


58x117 mm

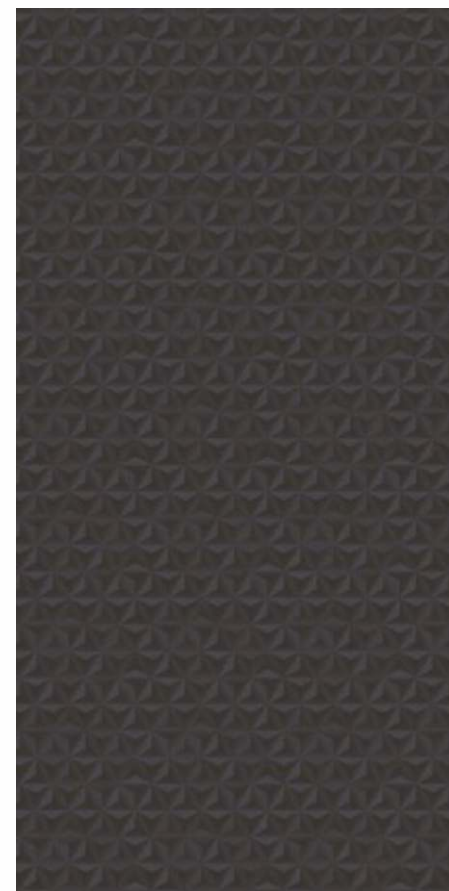
ZM 9098  
PICCOLA



ZM 5216  
SMOKE VISTA



ZF 5217  
AZALEA



ZM 9099  
MIKADO



ZM 5215  
MOSS VISTA



ZF 5218  
ROBINIA

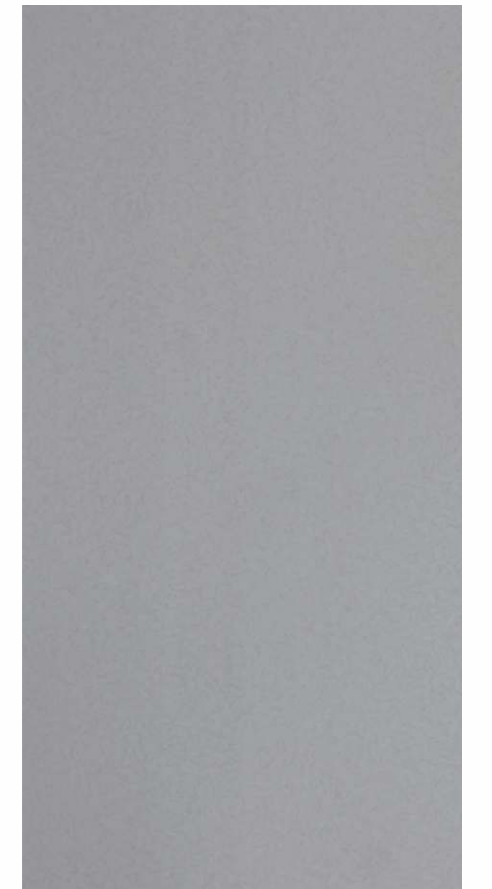
# MAVERICK

*forms*

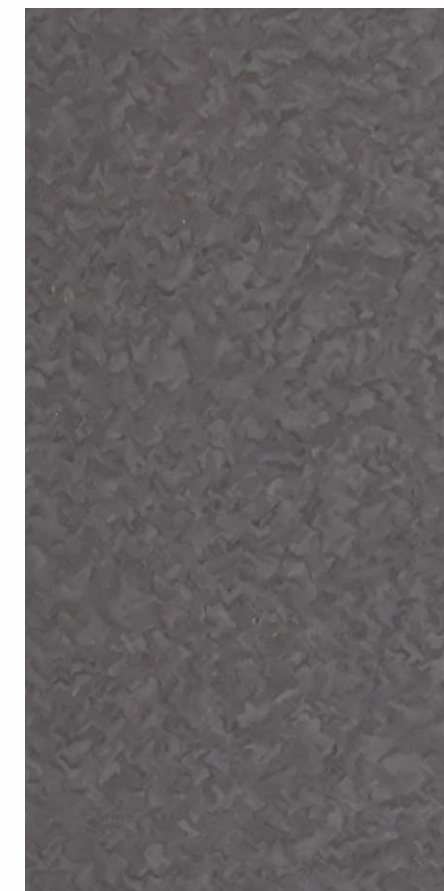


58x117 mm

DO 5214  
NATURAL LEHERIYA



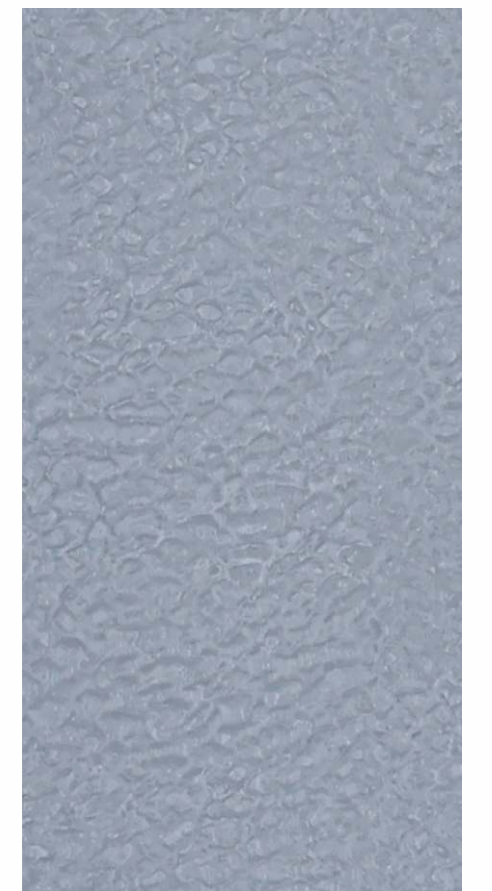
ZF 5205  
FELIX



ZF 5206  
SMOKED FELIX



DO 5213  
LEHERIYA

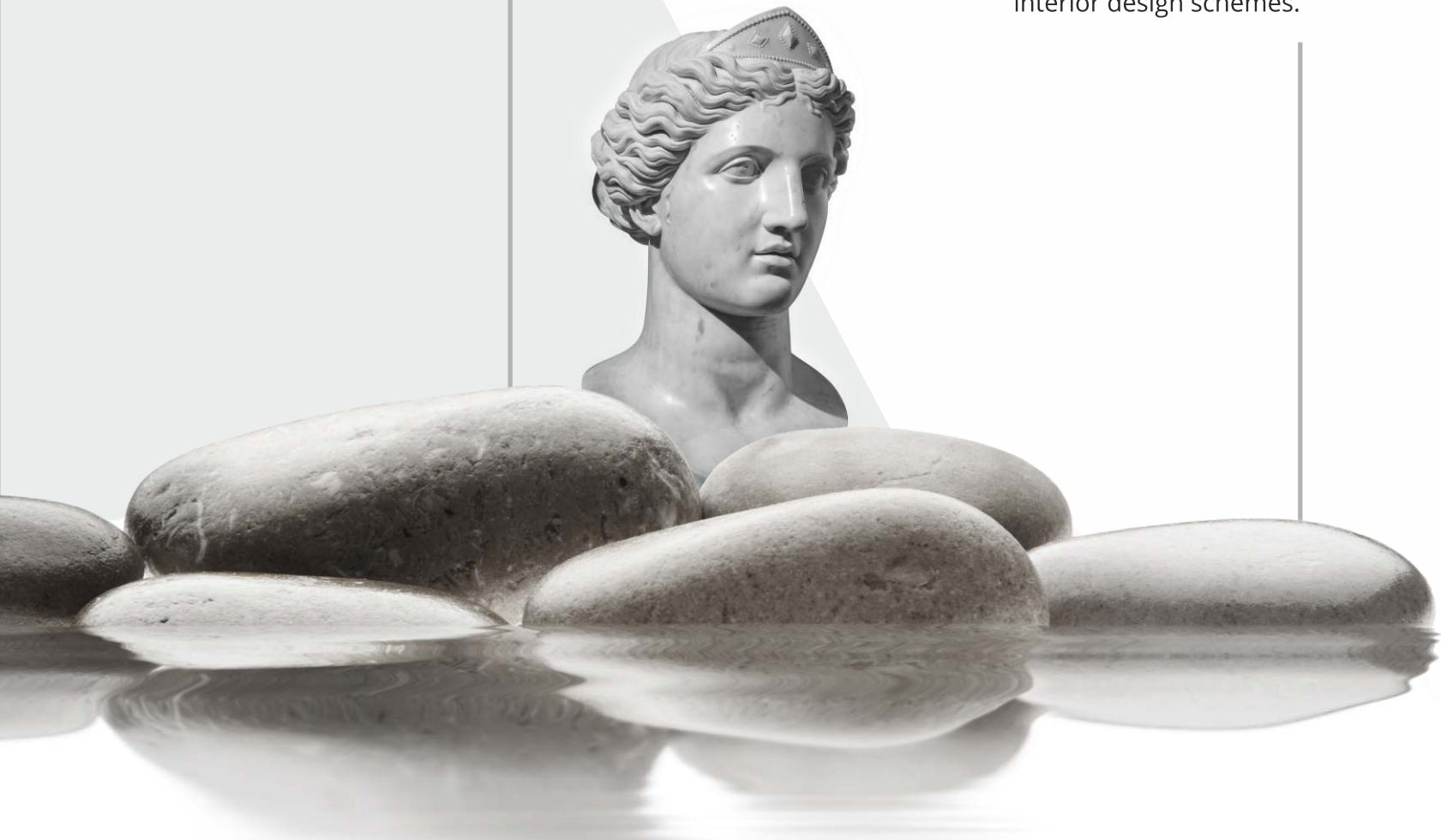


ZF 5210  
SYLVAIN BURL



# CRUST & *Rust*

Unique textured surfaces that replicate the appearance of aged and weathered elements of nature, adding a rugged aesthetic to interior design schemes.



208x133 mm

NL 2002 ★ Luxe  
AQUBA BALL



58x117 mm

NL 2007 ★ Luxe  
CINDER EARTHY



NL 2003 ★ Luxe  
STROMBOLI



VR 2004 ★ Luxe  
WEATHERED WALNUT






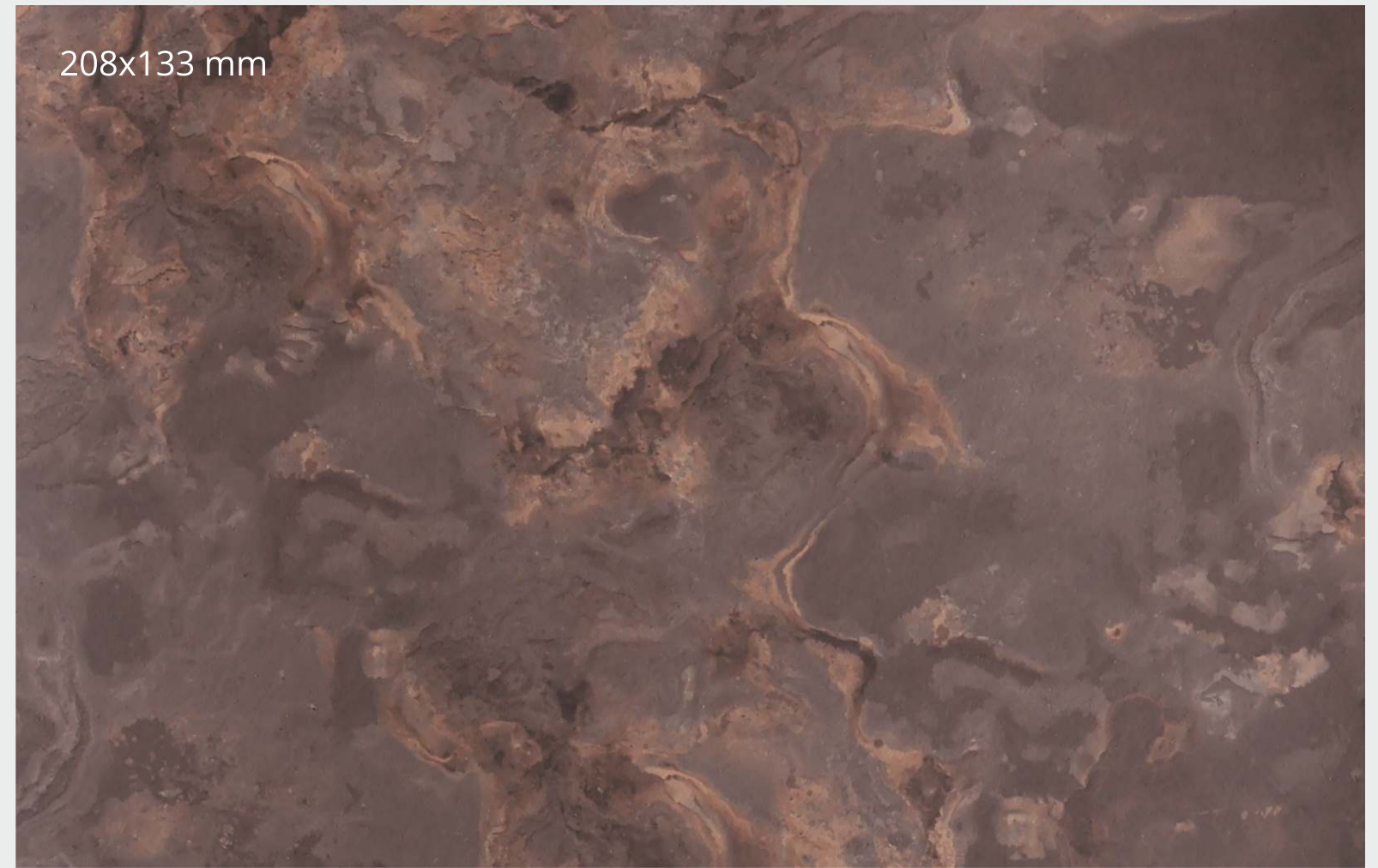
ZS 5211  
MILKY WAY STONE



ZS 5212  
GALAXY STONE



CY 5208   
TERRA VISTA



CY 5207   
MAHAL STONE



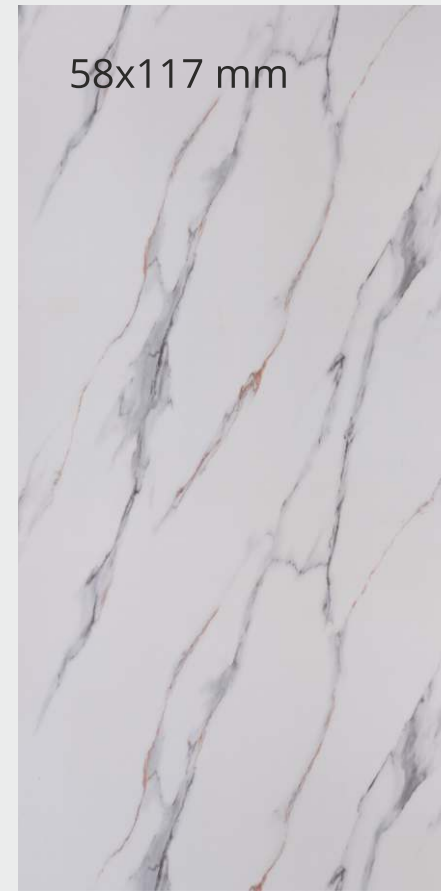
DO 1158  
AQUA KYANITE



DO 5201  
PLATINO



DO 9530  
ONYX



ZS 1070  
CALACATTA



DO 9064  
PIETRA SLATE



DO 9531  
KAOLIN

# SASSY & Synchro

77x272 mm



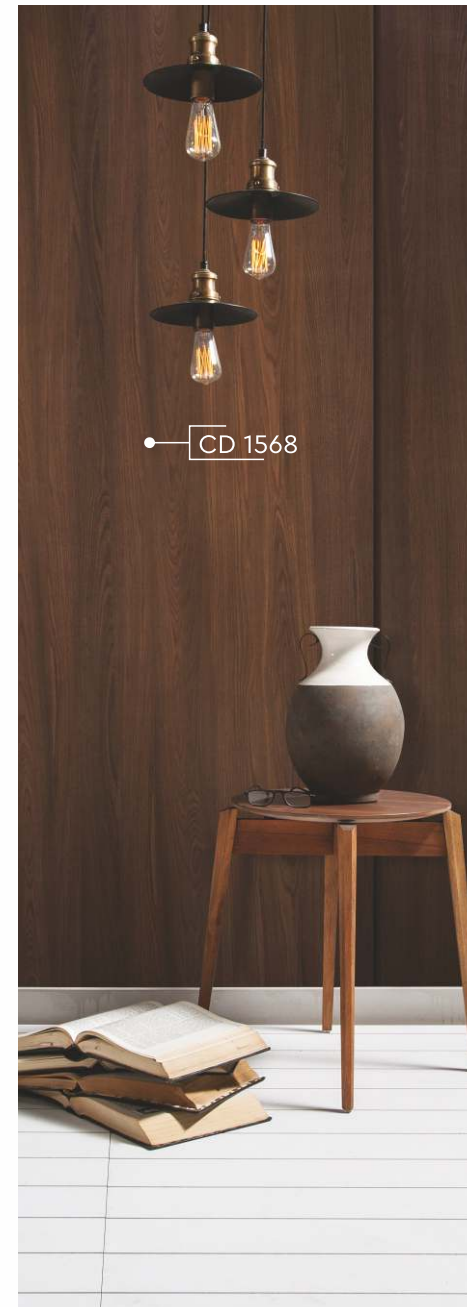
MD 1559 **P++**  
SHERWOOD WALNUT



MD 1560 **P++**  
SPANISH WALNUT



## NICHE *designs*



77x272 mm



CD 1569 **P++**  
LIVE WALNUT



CD 1568 **P++**  
PERUVIAN WALNUT



# MOODS & *Woods*

A versatile range of realistic wood grain patterns and textures that evoke various moods, from rustic charm to modern elegance, adding warmth and character to any space.



SF 1160  
URBAN ASHWOOD



RE 1187  
UNIQUE OAK



SF 1571  
VIRGINIA PINE



SF 1161  
CLASSIC ASHWOOD



IC 1193  
LIGHT GRAIN TEAK



SF 1570  
SCOT PINE





58x117 mm

SF 1057  
URBAN ASHWOOD



RE 1173  
NORDIC SATIN



IC 1192  
NATURAL OAK FIDDLE



SF 1058  
NATURAL ASHWOOD



SF 1572  
WEATHERED OAK

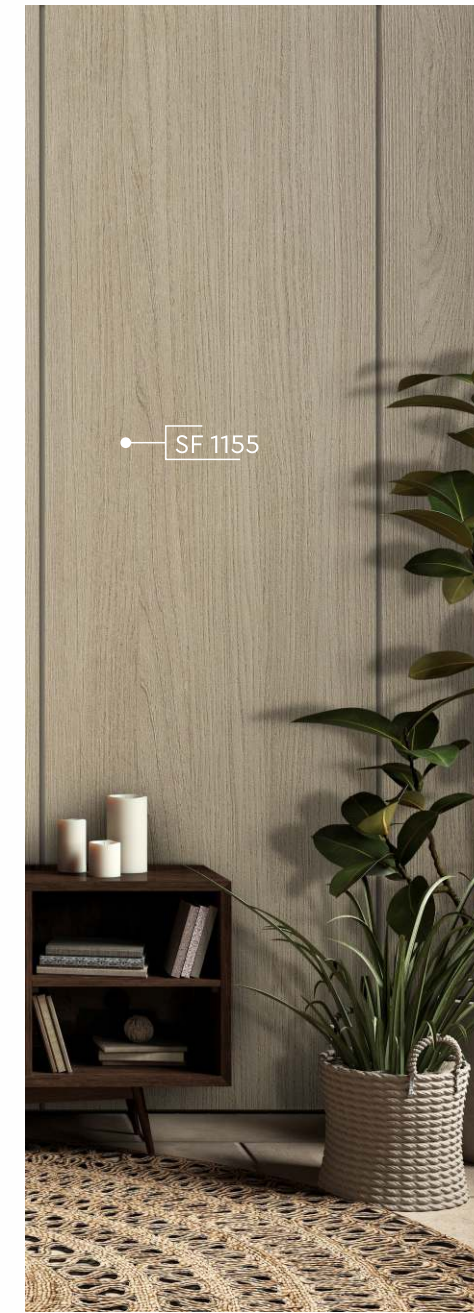


IC 1191  
OAK FIDDLE



# ENTICING

*ferwor*



SF 1155



58x117 mm

IC 1186  
DANISH DYED



SF 1155  
CHESTNUT OAK



RE 1179  
SMOKE OAK



RE 1171  
COLONIAL WOOD





RV 5411  
TASMANIA NATURAL CUT



VR 1175  
DYED CHESTNUT



SF 1154  
SMOKE OAK



RE 1178  BLEACHED OAK



DO 1567  
SMOKE GUMTREE



RV 5412  
TASMANIA CROSS CUT



VR 1174  
SPICE CHESTNUT



IC 1561  SALON SATIN



RE 1170  GREY RUGGED WOOD



DO 1566  
DARK GUMTREE



**MODERN**  
*realm*



58x117 mm



SF 9043  
SIAM TEAK



IC 1176  
GOLDEN WALNUT



IC 1584  
CURLY PEARL



58x117 mm



SF 1178  
BLEACHED OAK



SF 1584  
CURLY PEARL



SF 9042  
SIAM TEAK CHAMPAGNE



IC 1177  
COUNTRY WALNUT



IC 1583  
IMPERIAL PEARL



SF 1179  
SMOKE OAK



SF 1583  
IMPERIAL PEARL



AUTHENTIC  
*reign*





58x117 mm

HL 1143  
PRIME WALNUT



TRENDING AND  
*novel surfaces*



58x117 mm

RO 1102  
RADIANCE ELM



CL 1136  
MEDITERRANEAN WALNUT



RD 9069  
CADIZ WALNUT



HL 1144  
PRIME WALNUT



SF 9025  
WARM WALNUT



IC 1152  
RUSTIC WALNUT



CL 1110  
JSONIC WALNUT



RD 9078  
OAK FLAKES

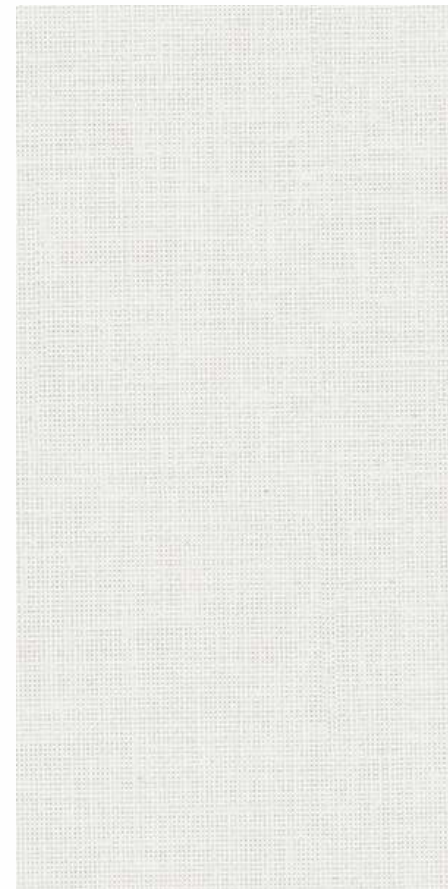




ARC  
*collection*



SF 7875  
GREY FLEECE



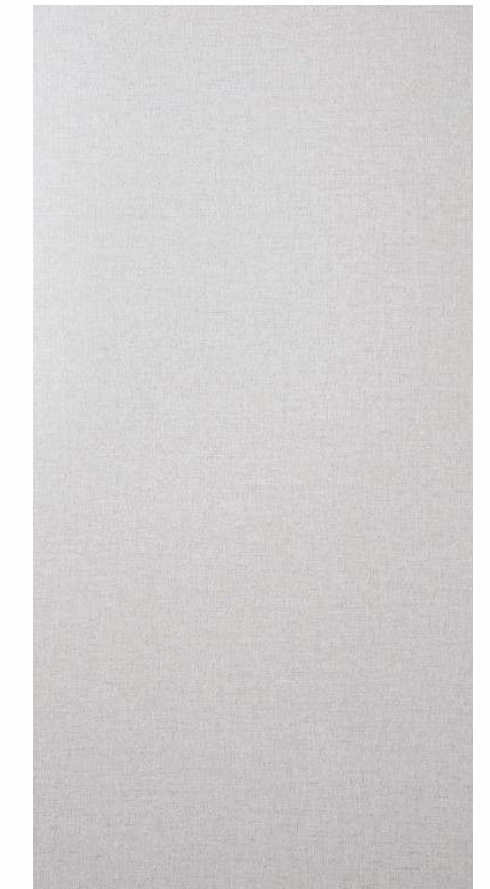
SF 784 | \*SM 28874  
SUBTLE MESS



SF 7867  
COOL TARTAN



SF 7863 | \*SM 28863  
BRIGHT TAFFETA



SF 778 | \*SM 2878  
GAUZE LINEN



SF 7873 | \*SM 28873  
SATIN LIGHT



SF 7862 | \*SM 28862  
CAMRO LAWN



SF 785 | \*SM 2885  
BUTTERKNOT



SF 7866  
REAL TARTAN



SF 7864 | \*SM 28864  
RAW TAFFETA



SF 709 | \*SM 2809  
LINEN



# VIBRON®

Make the  
reg mark smaller  
and shift the  
placement  
slightly  
upwards



## EMULATING THE NEOLITHIC *charm*



108x117 mm

NL 179  
WHYTE BLUE

48x33 mm

NL 154 | \*SM 2154  
CAPE GREY

NL 156 | \*SM 2156  
SEA PEARL

NL 137 | \*SM 2137  
RUSTIC ORANGE

NL 108 | \*SM 2108  
GOTHIC GREY

NL 111 | \*SM 2111  
IRISH CREAM

NL 170  
CLASSY CARAMEL

NL 135 | \*SM 2135  
COOL GREY

NL 136 | \*SM 2136  
STYLISH BEIGE

NL 180 | \*SM 2180  
CLARY JADE

NL 107 | \*SM 2107  
DARK GREY

NL 112 | \*SM 2112  
PEBBLE

NL 139 | \*SM 2139  
CHIC GREEN

\*DorbyEgde®-Exclusive edge bands by Dorby



77x272 mm

CO 152 | \*SM 2152  
CHARCOAL

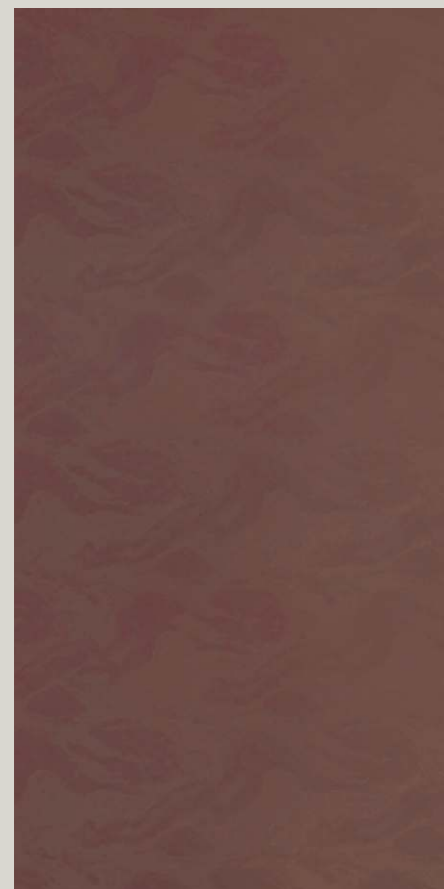


58x117 mm

CO 156 | \*SM 2156  
SEA PEARL



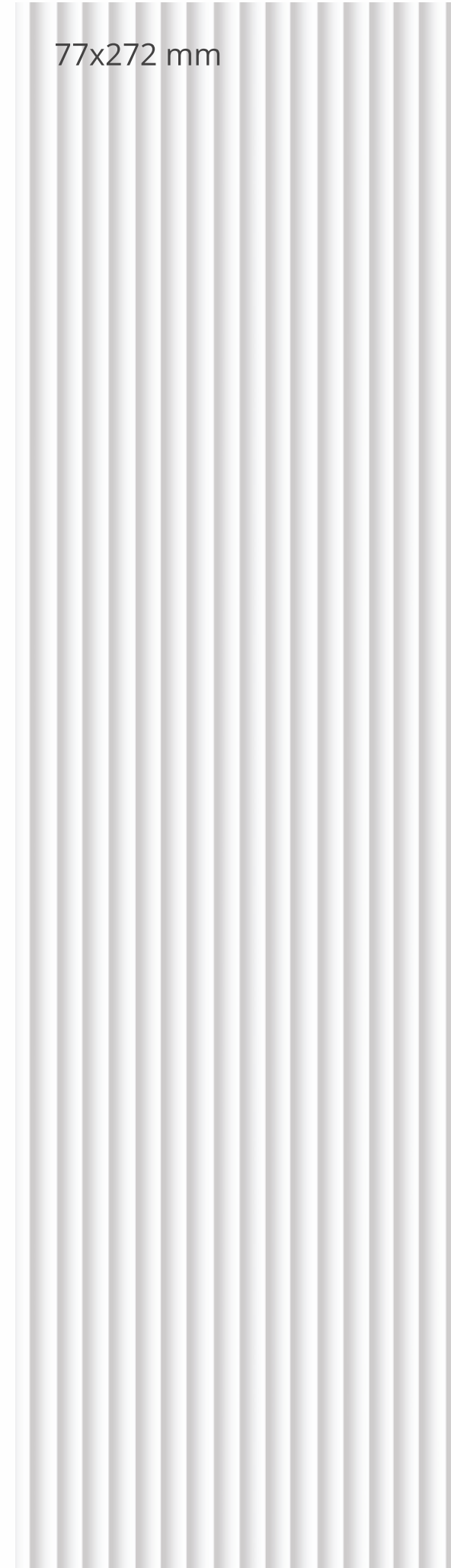
CO 165  
LUSH



CO 167 | \*SM 2167  
BRICK BROWN

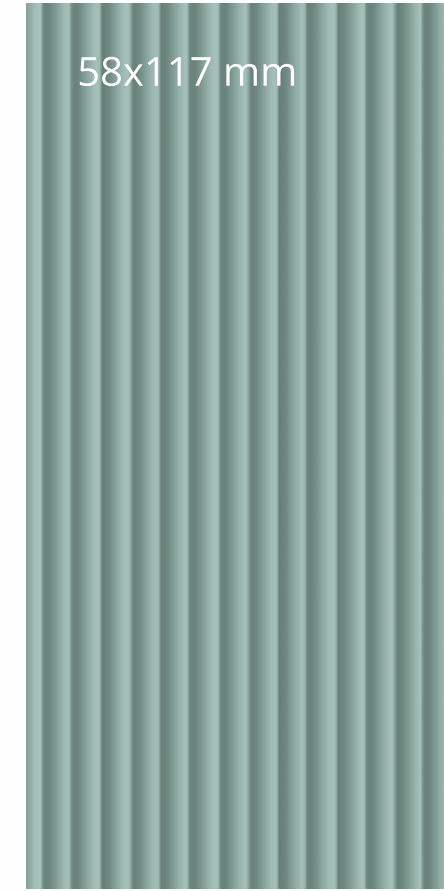


CO 140 | \*SM 2140  
CHOCOLATE



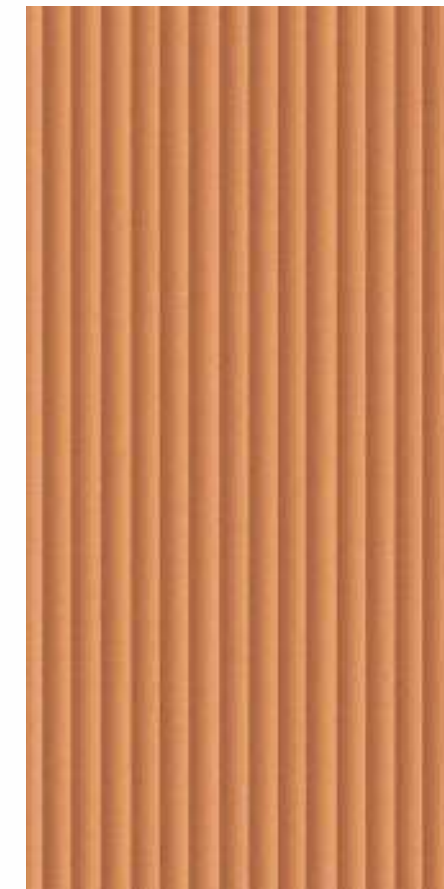
77x272 mm

BF 198  
WHITE WHISPER

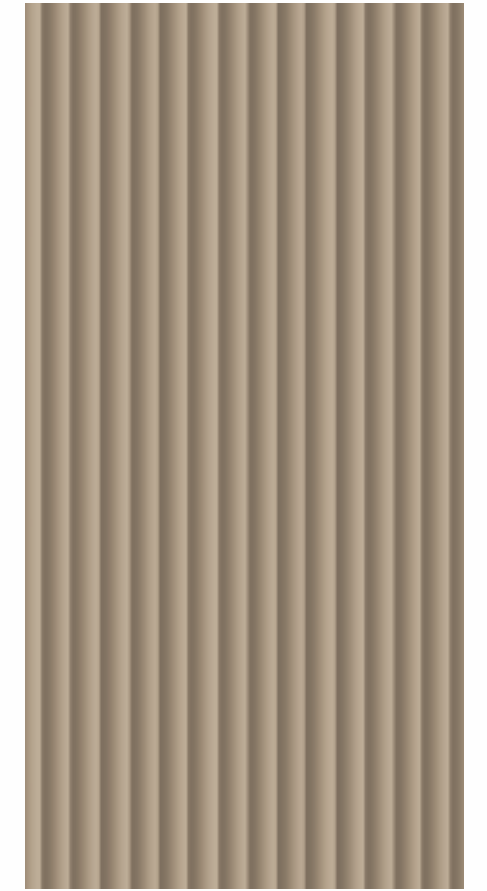


58x117 mm

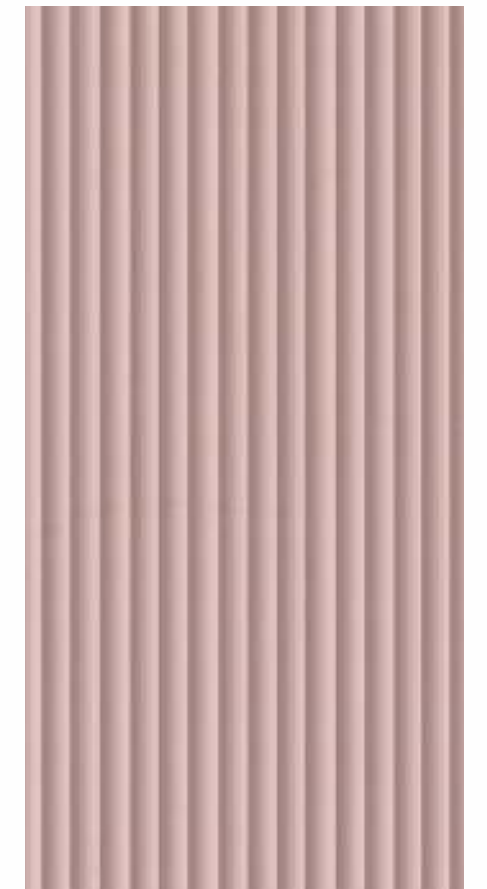
BF 146 | \*SM 2146  
SHORE



BF 137 | \*SM 2137  
RUSTIC ORANGE



BF 188  
CERAMIC BEIGE

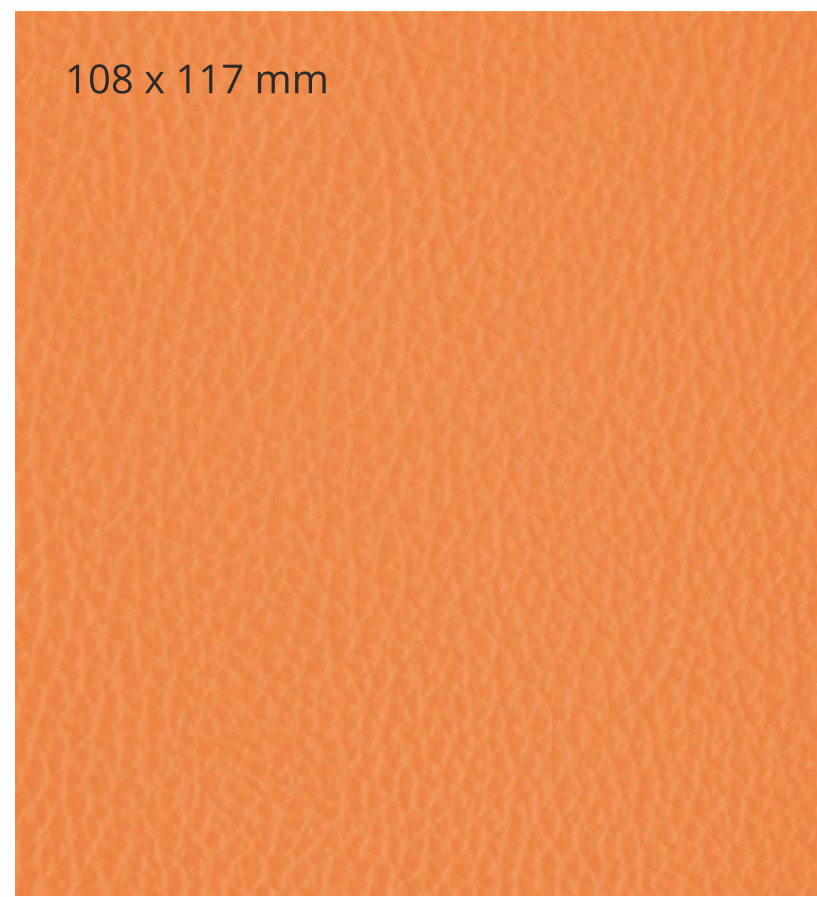


BF 181  
VINTAGE WINE

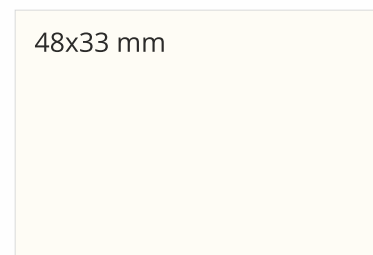
# SOPHISTICATION

*elegance*

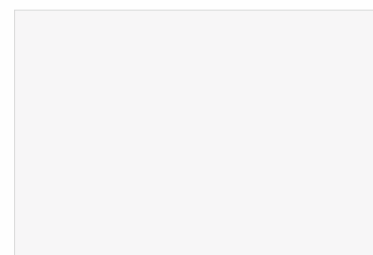
Laminates with a luxurious leather texture offer a sophisticated and elegant touch to any surface



LT 137 | \*SM 2137  
RUSTIC ORANGE



LT 104 | \*SM 2104  
FROSTY WHITE



LT 198  
WHITE WHISPER



LT 155 | \*SM 2155  
GLISTEN



LT 108 | \*SM 2108  
GOTHIC GREY



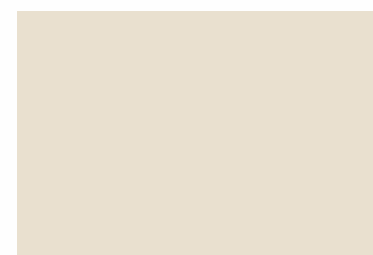
LT 135 | \*SM 2135  
COOL GREY



LT 152 | \*SM 2152  
CHARCOAL



LT 178  
MAGNETIC GREY



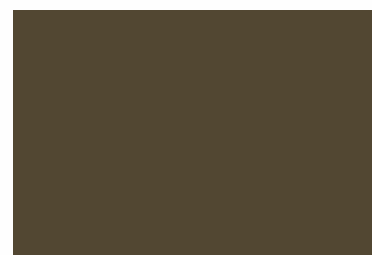
LT 156 | \*SM 2156  
SEA PEARL



LT 111 | \*SM 2111  
Irish Cream



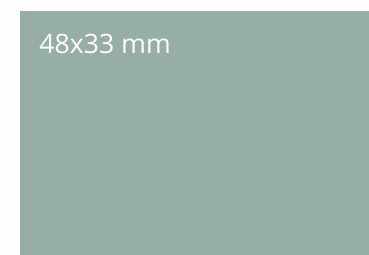
LT 136 | \*SM 2136  
STYLISH BEIGE



LT 149 | \*SM 2149  
MOCHA



LT 138 | \*SM 2138  
SWANK BROWN



LT 146  
SHORE



LT 179  
WHYTE BLUE



LT 130 | \*SM 2130  
SERENE BLUE



LT 144 | \*SM 2144  
LIVID



LT 182 | \*SM 2182  
MELLOW ROSE



LT 168  
FIESTA ROSE



LT 165  
LUSH



LT 170  
CLASSY CARAMEL

# SPARKLING WONDER

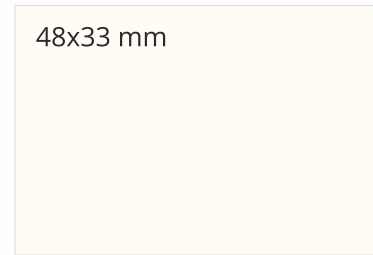
*of creations*



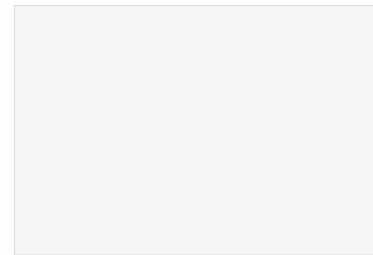
GL 116  
BLACK CURRENT



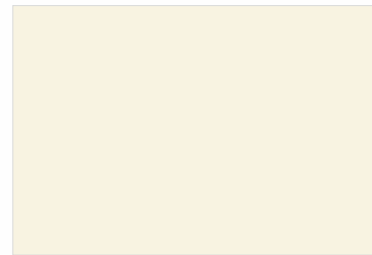
GL 148 | HG 2148  
AQUA TEAL



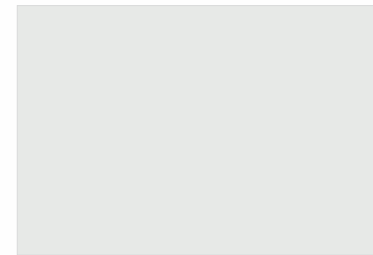
ZM 104 | \*SM 2104  
FROSTY WHITE



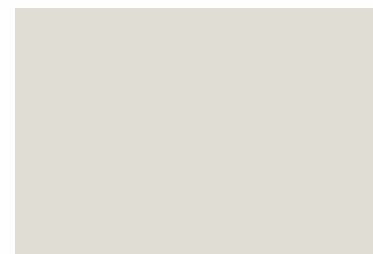
ZM 198  
WHITE WHISPER



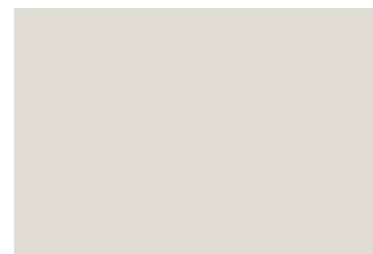
ZM 196  
OSAKA IVORY



ZM 106 | \*SM 2106  
SILVER GREY



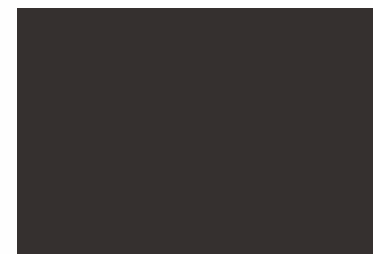
ZM 153 | \*SM 2153  
PEARL GREY



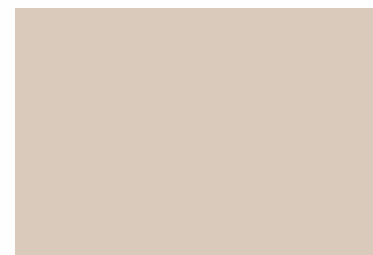
ZM 154 | \*SM 2154  
CAPE GREY



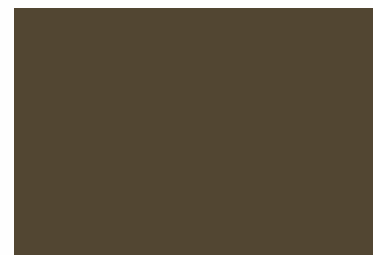
ZM 152 | \*SM 2152  
CHARCOAL



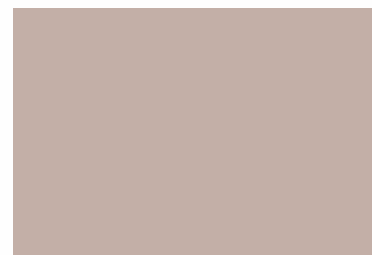
ZM 109 | \*SM 3109  
BLACK



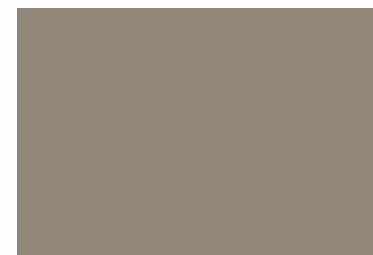
ZM 111 | \*SM 2111  
IRISH CREAM



ZM 149 | \*SM 2149  
MOCHA



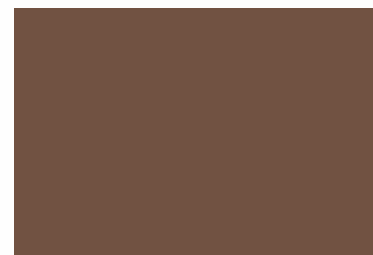
ZM 136 | \*SM 2136  
STYLISH BEIGE



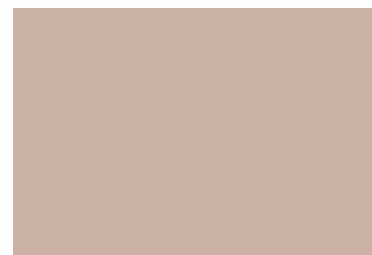
ZM 138 | \*SM 2138  
SWANK BROWN



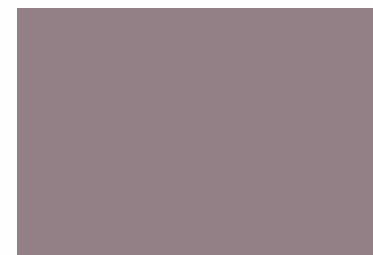
ZM 137 | \*SM 2137  
RUSTIC ORANGE



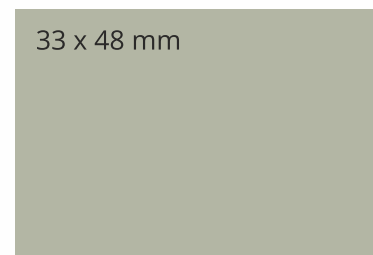
ZM 167 | \*SM 2167  
BRICK BROWN



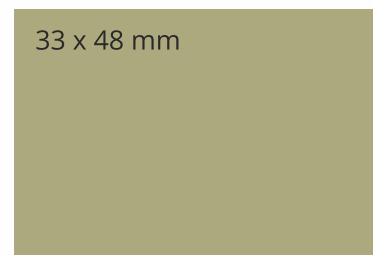
ZM 182 | \*SM 2182  
MELLOW ROSE



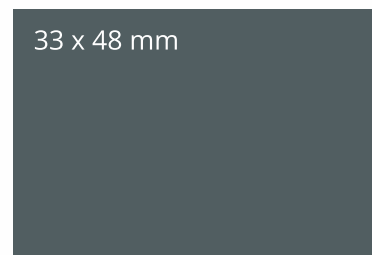
ZM 181  
VINTAGE WINE



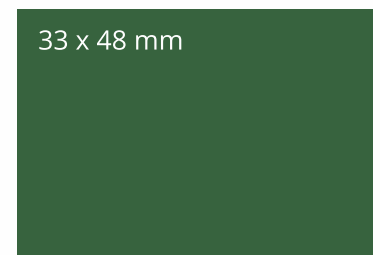
ZM 162 | \*SM 2162  
DESERT SAGE



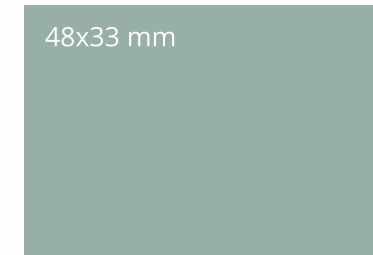
ZM 180 | \*SM 2180  
CLARY JADE



ZM 148 | \*SM 2148  
AQUA TEAL



ZM 128  
EMERALD



ZM 146 | \*SM 2146  
SHORE



ZM 163  
SKY BLUE



ZM 144 | \*SM 2144  
LIVID



ZM 164 | \*SM 2164  
FOGG



ZM 169  
ENGLISH PLUM



ZM 116  
BLACK CURRENT

# MODERN AND UNDERSTATED

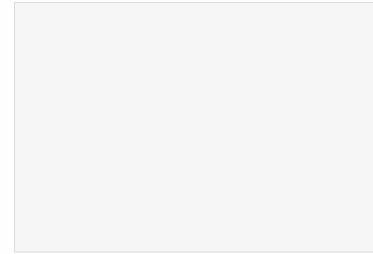
*elegance*

Smooth, non-reflective modern finishes

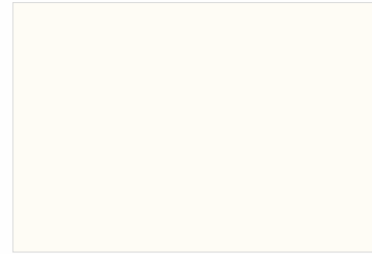




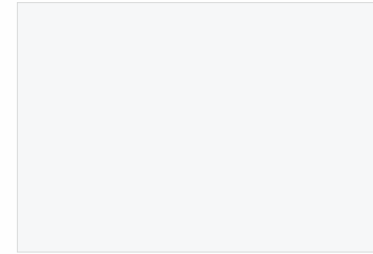
SF 101 | \*SM 2101  
COLD WHITE



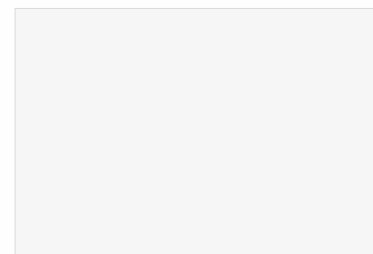
SF 102 | \*SM 2102  
WHITE



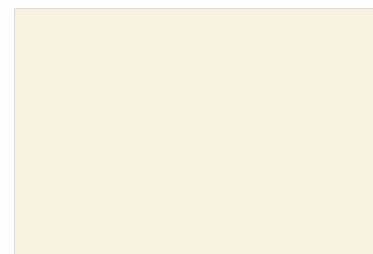
SF 104 | \*SM 2104  
FROSTY WHITE



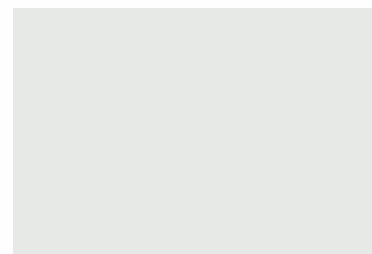
SF 185  
MILKY SNOW WHITE



SF 198  
WHITE WHISPER



SF 196  
OSAKA IVORY



SF 106 | \*SM 2106  
SILVER GREY



SF 154 | \*SM 2154  
CAPE GREY



SF 155 | \*SM 2155  
GLISTEN



SF 108 | \*SM 2108  
GOTHIC GREY



SF 200  
ALLURA GREY



SF 135 | \*SM 2135  
COOL GREY



SF 152 | \*SM 2152  
CHARCOAL



SF 107 | \*SM 2107  
DARK GREY



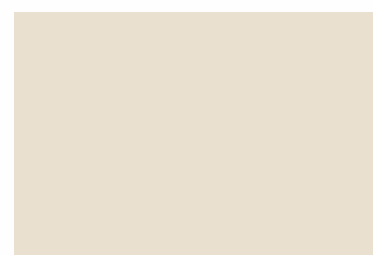
SF 178  
MAGNETIC GREY



SF 109 | \*SM 2109  
BLACK



SF 190  
BARLEY



SF 156 | \*SM 2156  
SEA PEARL



SF 111 | \*SM 2111  
IRISH CREAM



SF 151 | \*SM 2151  
BEIGE



SF 188  
CERAMIC BEIGE



SF 187  
NATURAL BEIGE



SF 149 | \*SM 2149  
MOCHA



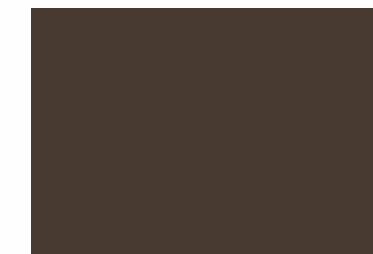
SF 136 | \*SM 2136  
STYLISH BEIGE



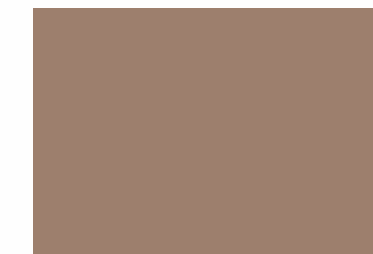
SF 112 | \*SM 2112  
PEBBLE



SF 138 | \*SM 2138  
SWANK BROWN



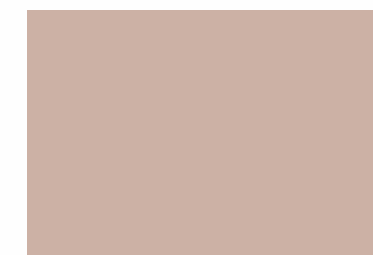
SF 140 | \*SM 2140  
CHOCOLATE



SF 161 | \*SM 2161  
BRUNETTE



SF 167 | \*SM 2167  
BRICK BROWN



SF 182 | \*SM 2182  
MELLOW ROSE



SF 137 | \*SM 2137  
RUSTIC ORANGE



SF 168  
FIESTA ROSE



SF 123  
MARIE GOLD



SF 124  
YELLOW



SF 170  
CLASSY CARAMEL



SF 128  
EMERALD



SF 180 | \*SM 2180  
CLARY JADE



SF 162 | \*SM 2162  
DESERT SAGE



SF 139 | \*SM 2139  
CHIC GREEN



SF 165  
LUSH

48x33 mm



SF 179  
WHYTE BLUE



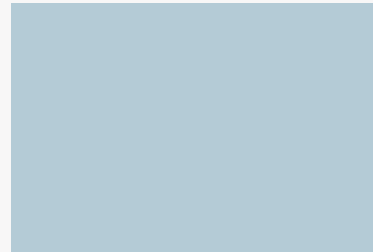
SF 144 | \*SM 2144  
LIVID



SF 146 | \*SM 2146  
SHORE



SF 148 | \*SM 2148  
AQUA TEAL



SF 163  
SKY BLUE



SF 120  
AQUA



SF 164 | \*SM 2164  
FOGG



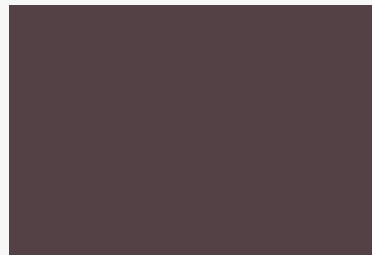
SF 130 | \*SM 2130  
SERENE BLUE



SF 181  
VINTAGE WINE



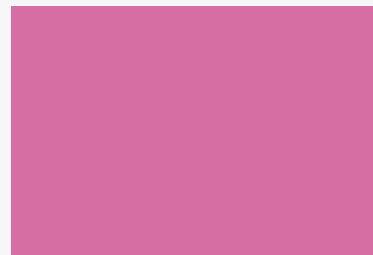
SF 169  
ENGLISH PLUM



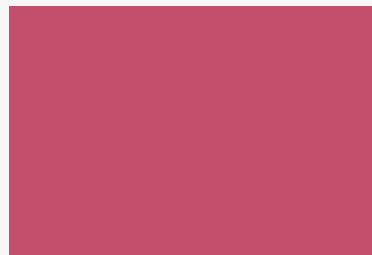
SF 116  
BLACK CURRENT



SF 118  
RED



SF 113  
PINK



SF 114  
POPPY



*Always* Looking  
Towards The *Future*

Sr. No.	Design No.	Finish	Design Name	Sym-bols	Grade	Page No.	Sr. No.	Design No.	Finish	Design Name	Sym-bols	Grade	Page No.	Sr. No.	Design No.	Finish	Design Name	Sym-bols	Grade	Page No.
1	2	LTD	Milano	P++	Exclusive	5	79	148	GL	Aqua Teal			32	157	1144	HL	Prime Walnut			23
2	3	LTD	Ritz	P++	Exclusive	6	80	148	SF	Aqua Teal	Ⓢ	Texture Premium	37	158	1152	IC	Rustic Walnut			23
3	14	VRD	Riveka	P++	Exclusive	5	81	148	ZM	Aqua Teal			33	159	1154	SF	Smoke Oak			19
4	50	NLD	Earthy Blu	P++	Exclusive	4	82	149	LT	Mocha			31	160	1155	SF	Chestnut Oak			18
5	51	NLD	Multi Quartz	P++	Exclusive	4	83	149	SF	Mocha			36	161	1158	DO	Aqua Kyanite			11
6	54	NLD	Clayline	P++	Exclusive	3	84	149	ZM	Mocha			33	162	1160	SF	Urban Ashwood			16
7	56	CYD	Ibiza	P++	Exclusive	3	85	151	SF	Beige			35	163	1161	SF	Classic Ashwood			16
8	57	NLD	Onyx	P++	Exclusive	3	86	152	CO	Charcoal	Ⓢ	Texture Premium	29	164	1170	RE	Grey Rugged Wood			20
9	58	CYD	Solace	P++	Exclusive	3	87	152	LT	Charcoal	Ⓢ	Texture Premium	31	165	1171	RE	Colonial Wood			18
10	59	CYD	Mirage	P++	Exclusive	4	88	152	SF	Charcoal	Ⓢ	Texture Premium	35	166	1173	RE	Nordic Satin			17
11	60	LTD	Binaco	P++	Exclusive	5	89	152	ZM	Charcoal	Ⓢ	Texture Premium	33	167	1174	VR	Spice Chestnut			19
12	61	CYD	Nexus	P++	Exclusive	5	90	153	ZM	Pearl Grey			33	168	1175	VR	Dyed Chestnut			19
13	62	ZSD	Quanta	P++	Exclusive	4	91	154	NL	Cape Grey	Ⓢ	Texture Premium	28	169	1176	IC	Golden Walnut			21
14	63	BFD	Echo	P++	Exclusive	2	92	154	SF	Cape Grey	Ⓢ	Texture Premium	35	170	1177	IC	Country Walnut			21
15	64	CYD	Infinito	P++	Exclusive	2	93	154	ZM	Cape Grey	Ⓢ	Texture Premium	33	171	1178	RE	Bleached Oak			20
16	65	LTD	Synchron	P++	Exclusive	6	94	155	LT	Glisten			31	172	1178	SF	Bleached Oak			22
17	66	LTD	Jacquard	P++	Exclusive	6	95	155	SF	Glisten	Ⓢ	Texture Premium	35	173	1179	RE	Smoke Oak			18
18	67	LTD	Ethora	P++	Exclusive	6	96	156	CO	Sea Pearl			29	174	1179	SF	Smoke Oak			22
19	68	LTD	Ripple	P++	Exclusive	5	97	156	LT	Sea Pearl	Ⓢ	Texture Premium	31	175	1186	IC	Danish Dyed			18
20	101	SF	Cold White			35	98	156	NL	Sea Pearl	Ⓢ	Texture Premium	28	176	1187	RE	Unique Oak			16
21	102	SF	White			35	99	156	SF	Sea Pearl	Ⓢ	Texture Premium	35	177	1191	IC	Oak Fiddle			17
22	104	LT	Frosty White			31	100	161	SF	Brunette	Ⓢ	Texture Premium	36	178	1192	IC	Natural Oak Fiddle			17
23	104	SF	Frosty White			35	101	162	SF	Desert Sage			36	179	1193	IC	Light Grain Teak			16
24	104	ZM	Frosty White			33	102	162	ZM	Desert Sage	LUXE	Luxury	33	180	1559	MD	Sherwood Walnut			13
25	106	SF	Silver Grey			35	103	163	SF	Sky Blue	LUXE	Luxury	37	181	1560	MD	Spanish Walnut			13
26	106	ZM	Silver Grey			33	104	163	ZM	Sky Blue	Ⓢ	Texture Premium	34	182	1561	IC	Salon Satin			19
27	107	NL	Dark Grey			28	105	164	SF	Fogg			37	183	1566	DO	Dark Gumtree			20
28	107	SF	Dark Grey			35	106	164	ZM	Fogg			34	184	1567	DO	Smoke Gumtree			20
29	108	LT	Gothic Grey			31	107	165	CO	Lush			29	185	1568	CD	Peruvian Walnut			14
30	108	NL	Gothic Grey			28	108	165	LT	Lush	LUXE	Luxury	32	186	1569	CD	Live Walnut			14
31	108	SF	Gothic Grey			35	109	165	SF	Lush			36	187	1570	SF	Scot Pine			16
32	109	SF	Black			35	110	167	CO	Brick Brown			29	188	1571	SF	Virginia Pine			16
33	109	ZM	Black			33	111	167	SF	Brick Brown			36	189	1572	SF	Weathered Oak			17
34	111	LT	Irish Cream			31	112	167	ZM	Brick Brown	Ⓢ	Texture Premium	33	190	1583	IC	Imperial Pearl			22
35	111	NL	Irish Cream			28	113	168	LT	Fiesta Rose			32	191	1583	SF	Imperial Pearl			22
36	111	SF	Irish Cream			35	114	168	SF	Fiesta Rose	Ⓢ	Texture Premium	36	192	1584	IC	Curly Pearl			21
37	111	ZM	Irish Cream			33	115	169	SF	English Plum			37	193	1584	SF	Curly Pearl			22
38	112	NL	Pebble			28	116	169	ZM	English Plum	LUXE	Luxury	34	194	2002	NL	Aquba Ball			10
39	112	SF	Pebble			36	117	170	LT	Classy Caramel	LUXE	Luxury	32	195	2003	NL	Stromboli			10
40	113	SF	Pink			37	118	170	NL	Classy Caramel	LUXE	Luxury	28	196	2004	VR	Weathered Walnut			10
41	114	SF	Poppy			37	119	170	SF	Classy Caramel	LUXE	Luxury	36	197	2007	NL	Cinder Earthy			10
42	116	GL	Black Current			32	120	178	LT	Magnetic Grey			31	198	5201	DO	Platino			11
43	116	SF	Black Current			37	121	178	SF	Magnetic Grey			35	199	5205	ZF	Felix			8
44	116	ZM	Black Current			34	122	179	LT	Whyte Blue			32	200	5206	ZF	Smoked Felix			8
45	118	SF	Red			37	123	179	NL	Whyte Blue	Ⓢ	Texture Premium	28	201	5207	CY	Mahal Stone			12
46	120	SF	Aqua			37	124	179	SF	Whyte Blue	Ⓢ	Texture Premium	37	202	5208	CY	Terra Vista			11
47	123	SF	Marie Gold			36	125	180	NL	Clary Jade			28	203	5210	ZF	Sylvain Burl			8
48	124	SF	Yellow			36	126	180	SF	Clary Jade			36	204	5211	ZS	Milky Way Stone			11
49	128	SF	Emerald			36	127	180	ZM	Clary Jade			33	205	5212	ZS	Galaxy Stone			11
50	128	ZM	Emerald			33	128	181	BF	Vintage Wine			30	206	5213	DO	Leheriya			8
51	130	SF	Serene Blue			37	129	181	SF	Vintage Wine			37	207	5214	DO	Natural Leheriya			8
52	130	LT	Serene Blue			32	130	181	ZM	Vintage Wine			33	208	5215	ZM	Moss Vista			7
53	135	LT	Cool Grey			31	131	182	LT	Mellow Rose			32	209	5216	ZM	Smoke Vista			7
54	135	NL	Cool Grey			28	132	182	SF	Mellow Rose			36	210	5217	ZF	Azalea			7
55	135	SF	Cool Grey			35	133	182	ZM	Mellow Rose			33	211	5218	ZF	Robinia			7
56	136	LT	Stylish Beige			31	134	185	SF	Milky Snow White			35	212	5223	ZM	Tela			2
57	136	NL	Stylish Beige			28	135	187	SF	Natural Beige			36	213	5224	ZM	Tela Warm			2
58	136	SF	Stylish Beige			36	136	188	BF	Ceramic Beige			30	214	5411	RV	Tasmania Natural Cut			19
59	136	ZM	Stylish Beige			33	137	188	SF	Ceramic Beige			36	215	5412	RV	Tasmania Cross Cut			19
60	137	BF	Rustic Orange			30	138	190	SF	Barley			35	216	7862	SF	Camro Lawn			25
61	137	LT	Rustic Orange			31	139	196	SF	Osaka Ivory			35	217	7863	SF	Bright Taffeta			26
62	137	NL	Rustic Orange			28	140	196	ZM	Osaka Ivory			33	218	7864	SF	Raw Taffeta			26
63	137	SF	Rustic Orange			36	141	198	BF	White Whisper			30	219	7866	SF	Real Tartan			26
64	137	ZM	Rustic Orange			33	142	198	LT	White Whisper			31	220	7867	SF	Cool Tartan			26
65	138	LT	Swank Brown			31	143	198	SF	White Whisper			35	221	7873	SF	Satin Light			25
66	138	SF	Swank Brown			36	144	198	ZM	White Whisper			33	222	7875	SF	Grey Fleece			25
67	138	ZM	Swank Brown			33	145	200	SF	Allura Grey			35	223	9025	SF	Warm Walnut			23
68	139	NL	Chic Green			28	146	709	SF	Linen			26	224	9042	SF	Siam Teak Champagne			21
69	139	SF	Chic Green			36	147	778	SF	Gauze Linen			26	225	9043	SF	Siam Teak			21
70	140	CO	Chocolate			29	148	784	SF	Subtle Mess			25	226	9064	DO	Pietra Slate			12
71	140	SF	Chocolate			36	149	785	SF	Butterknot			25	227	9069	RD	Cadiz Walnut			24
72	144	LT	Livid			32	150	1057	SF	Urban Ashwood			17	228	9078	RD	Oak Flakes			24
73	144	SF	Livid			37	151	1058	SF	Natural Ashwood			17	229	9098	ZM	Piccola			7
74	144	ZM	Livid			34	152	1070	ZS	Calacatta			12	230	9099	ZM	Mikado			7
75	146	BF	Shore			30	153	1102	RO	Radiance Elm			24	231	9530	DO	Onyx			11
76	146	LT	Shore			32	154	1110	CL	Jsonic Walnut			24	232	9531	DO	Kaolin			12
77	146	SF	Shore			37	155	1136	CL	Mediterranean Walnut			24							
78	146	ZM	Shore			34	156	1143	HL	Prime Walnut			23							

PROPERTIES	UNIT	SPECIFIED VALUE AS PER IS 2046:1995 (HGS)	Dorby Mica Conforms	SPECIFIED VALUE AS PER IS 2046:1995 (VGS)	Dorby Mica Conforms
THICKNESS	mm	0.80 mm ± 0.10 %	✓	0.80 mm ± 0.10 %	✓
Resistance to dry heat at 180°C	Grade	Not worse than 4	✓	Not worse than 4	✓
Resistance to surface wear	Rev.	350 (revolution)	✓	150 (revolution)	✓
<b>Resistance to immersion in boiling water</b>					
Mass increase	%	7.5 (Max)	✓	12.0 (Max.)	✓
Thickness increase	%	8.5 (Max)	✓	14.0 (Max.)	✓
Appearance	Grade	Not worse than 4	✓	Not worse than 4	✓
<b>Dimensional stability at deviated temperature</b>					
Longitudinal	%	0.44 (Max)	✓	0.65 (Max)	✓
Transverse	%	0.86 (Max)	✓	0.675 (Max)	✓
Resistance to impact by small diameter ball	N Grade	20 N (Min)	✓	1.75 N (Min)	✓
Resistance to cracking	N	Not worse than 4	✓	Not worse than 4	✓
Resistance to scratching	Grade	2 N (Min)	✓	2 N (Min)	✓
Resistance to staining	Grade	Not worse than 5	✓	Not worse than 5	✓
Resistance to cigarette burns	Grade	Not worse than 3	✓	-	-
Resistance to steam		Not worse than 4	✓	Not worse than 4	✓